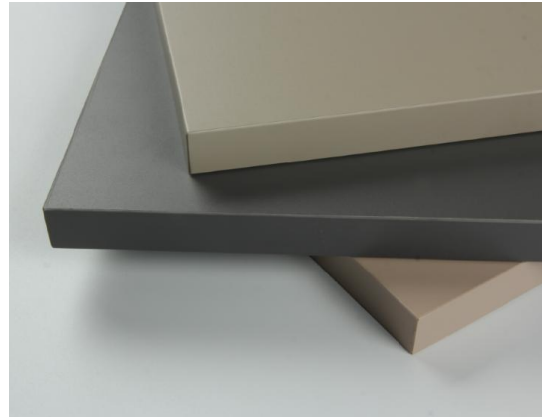




Kitchen Cabinet Door Colors



Contact: Ms.Kay He

Whatsapp/Wechat: +86 18676899073

Email: kay@aspirebuildingmaterials.com

Skype: kittyhe98

Site: aspirebuildingmaterials.com

Integrated U & J Handle Style

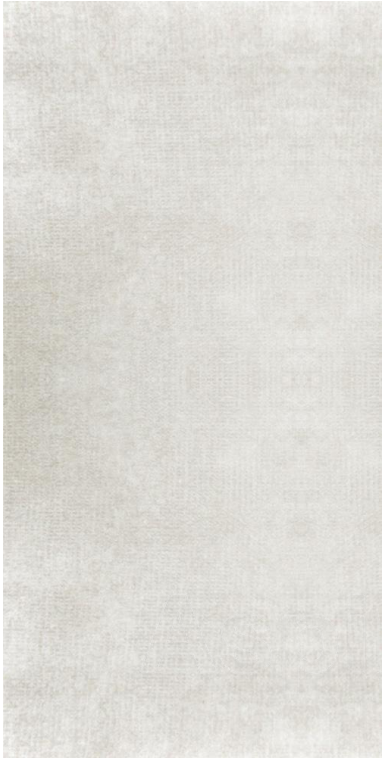


Color options for 25mm boards:

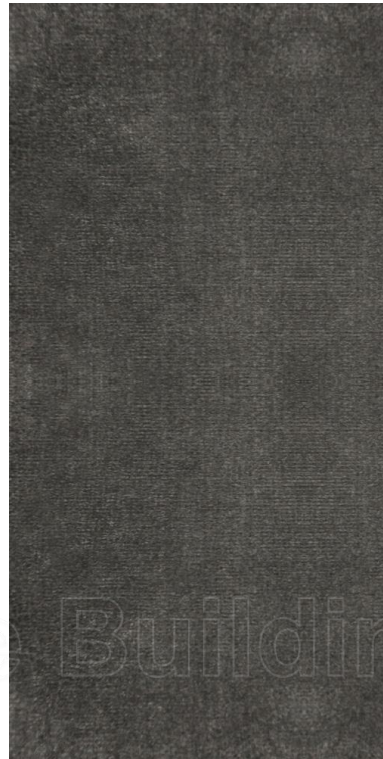
FY-001, FY-002, FY-003, FY-004, FY-005, FY-007, FY-008, FY-019, FY-021, FY-031, FY-033, FY-039, FY-050, FY-054, FY-056, FY-057, FY-061, FY-068, FY-69, FY-070, FY-072

U963, U999, F434, F638, H1379, H3157, H3325, H3331, H3332

Gloss UV marble



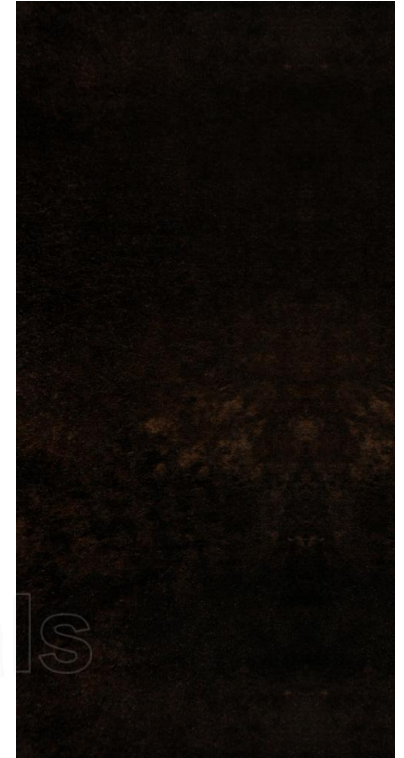
ZH-1701



ZH-1702



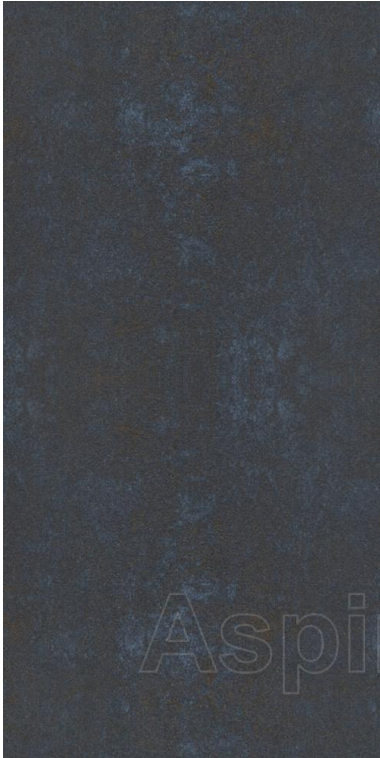
ZH-1703



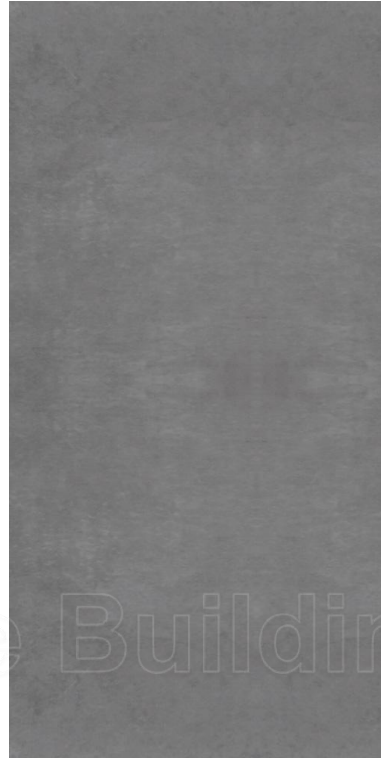
ZH-1704

Item No.	Base Material	Height (mm)	Thickness (mm)
All color above	Particle board	2700	18/25

Gloss UV marble



ZH-1706



ZH-1709



ZH-1721



ZH-1724

Item No.	Base Material	Height (mm)	Thickness (mm)
All color above	Particle board	2700	18/25

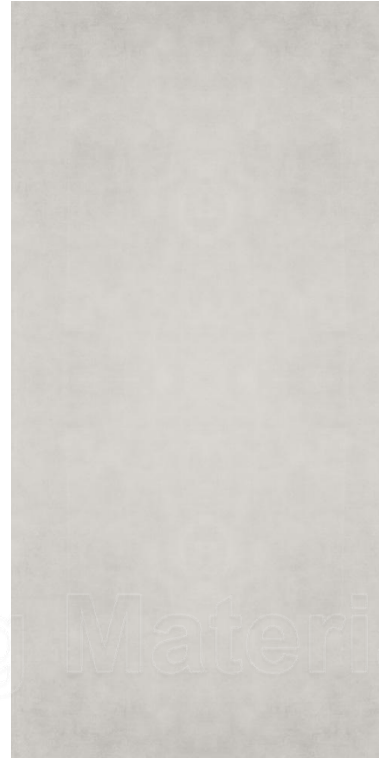
Gloss UV marble



ZH-1725



ZH-1726



ZH-1744



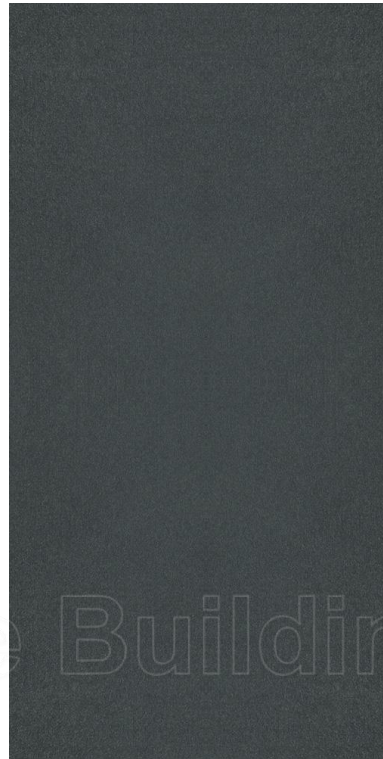
ZH-1750

Item No.	Base Material	Height (mm)	Thickness (mm)
All color above	Particle board	2700	18/25

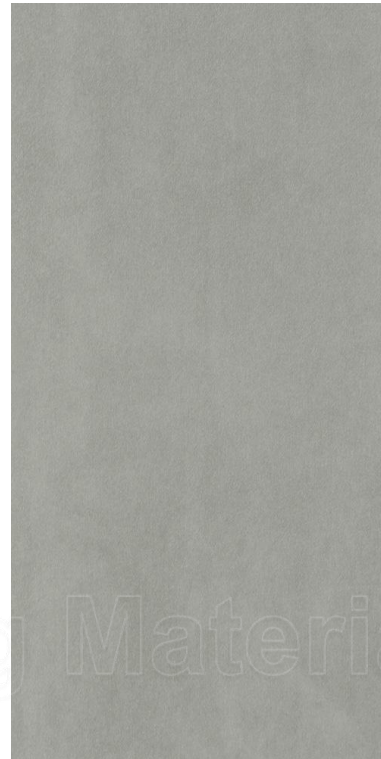
Gloss UV marble



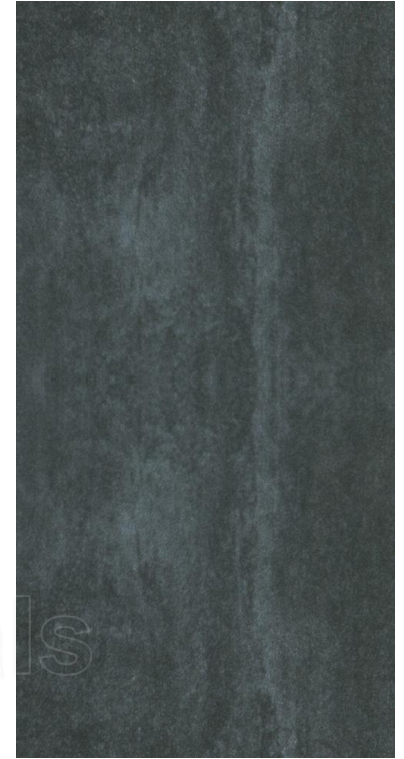
ZH-1761



ZH-1763



ZH-1765

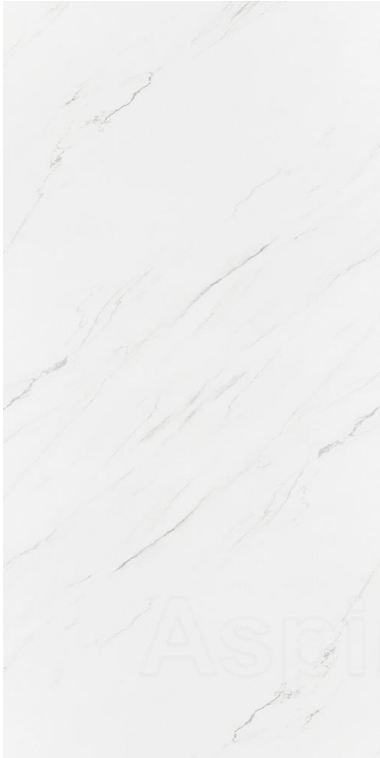


ZH-1766

Aspire Building Materials

Item No.	Base Material	Height (mm)	Thickness (mm)
All color above	Particle board	2700	18/25

Gloss UV marble



ZH-1779



ZH-1780



ZH-1782



ZH-1783

Item No.	Base Material	Height (mm)	Thickness (mm)
All color above	Particle board	2700	18/25

Gloss UV marble



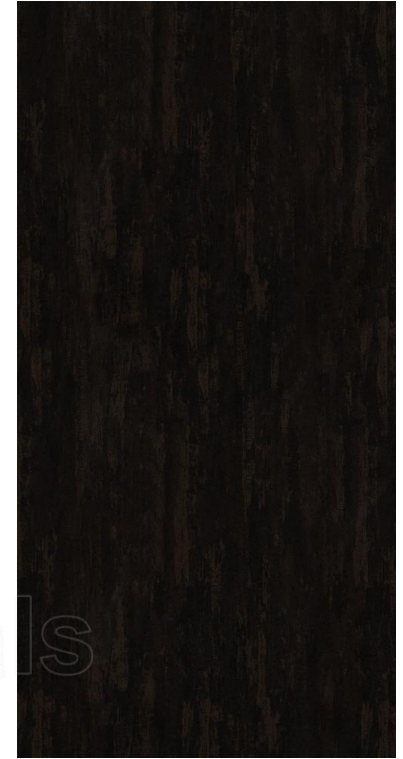
ZH-1790



ZH-1791



ZH-1792



ZH-1793

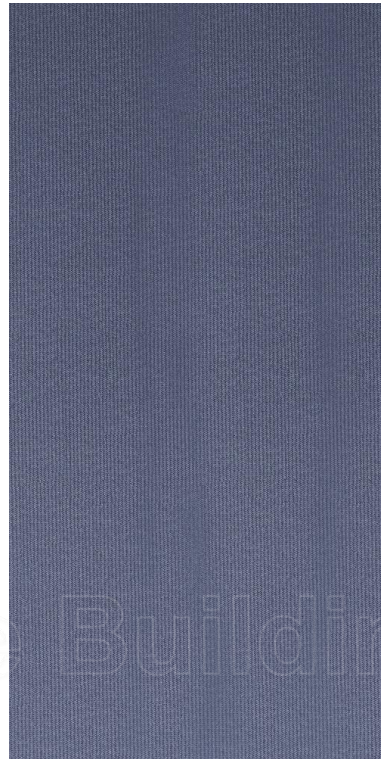
Aspire Building Materials

Item No.	Base Material	Height (mm)	Thickness (mm)
All color above	Particle board	2700	18/25

Gloss UV marble



ZH-1794



ZH-1795



ZH-1796

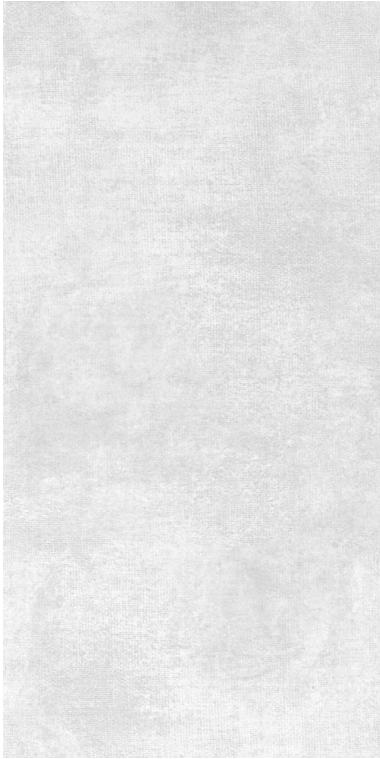


ZH-1797

Aspire Building Materials

Item No.	Base Material	Height (mm)	Thickness (mm)
All color above	Particle board	2700	18/25

Gloss UV MS



ZH-1701-2



ZH-1724-2



ZH-1739



ZH-1828

Item No.	Base Material	Height (mm)	Thickness (mm)
All color above	Particle board	2700	18/25

Gloss UV MS



ZH-1861



ZH-1862



ZH-1863



ZH-1864

Item No.	Base Material	Height (mm)	Thickness (mm)
All color above	Particle board	2700	18/25

Gloss UV MS



ZH-1865



ZH-1866



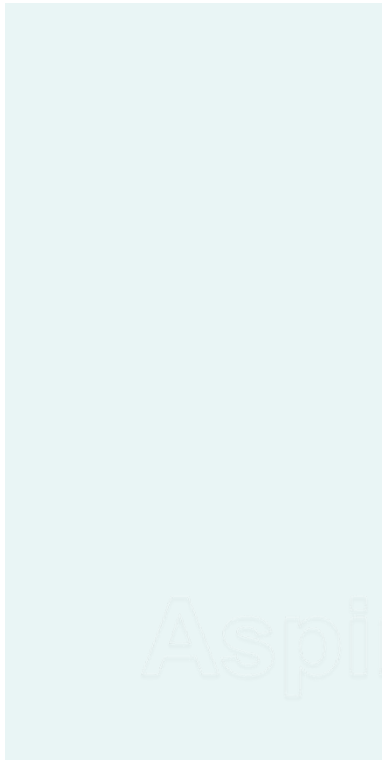
ZH-1867



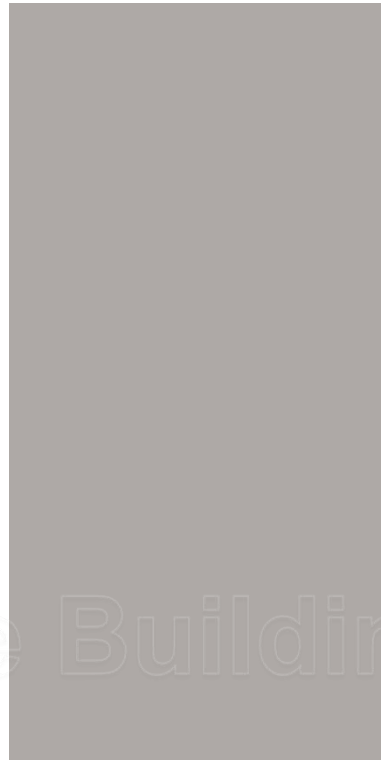
ZH-1868

Item No.	Base Material	Height (mm)	Thickness (mm)
All color above	Particle board	2700	18/25

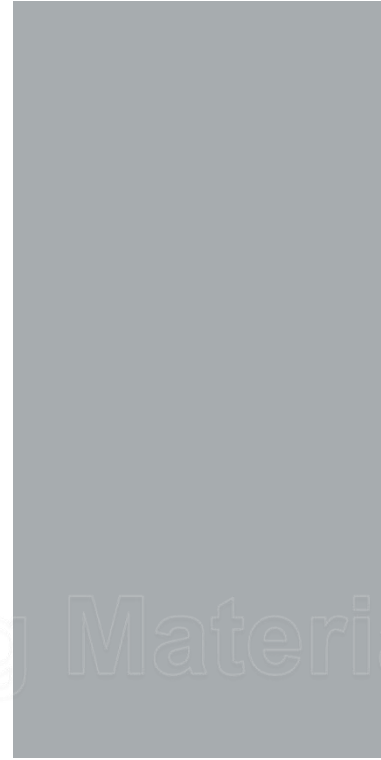
Matt FY series



FY-001



FY-002



FY-003

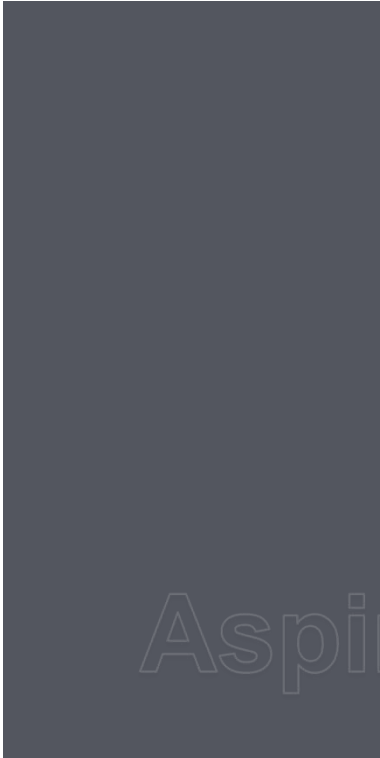


FY-004

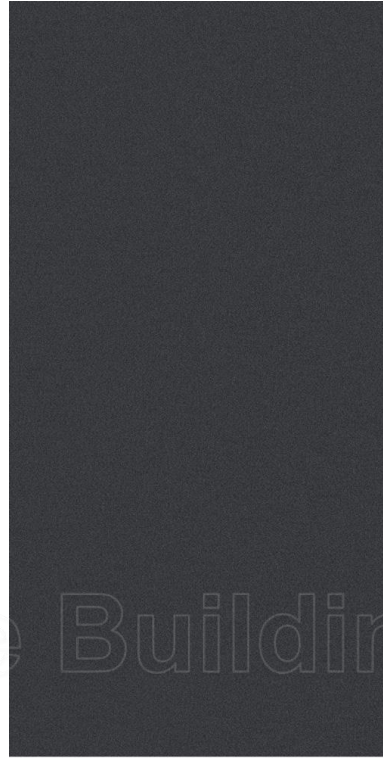
Aspire Building Materials

Item No.	Base Material	Height (mm)	Thickness (mm)
All color above	Particle board	2700	18/25

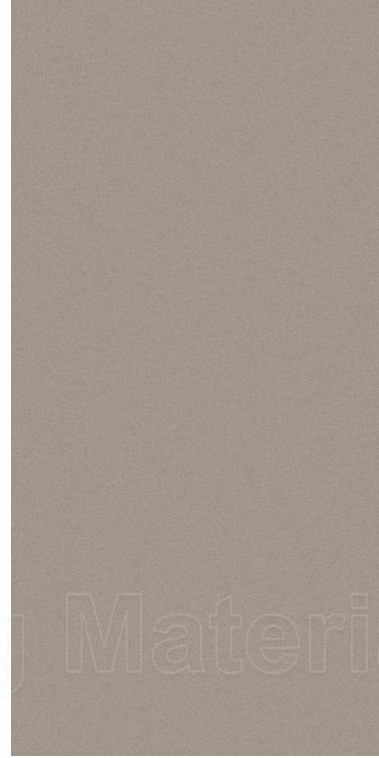
Matt FY series



FY-005



FY-007



FY-008



FY-031

Aspire Building Materials

Item No.	Base Material	Height (mm)	Thickness (mm)
All color above	Particle board	2700	18/25

Matt FY series



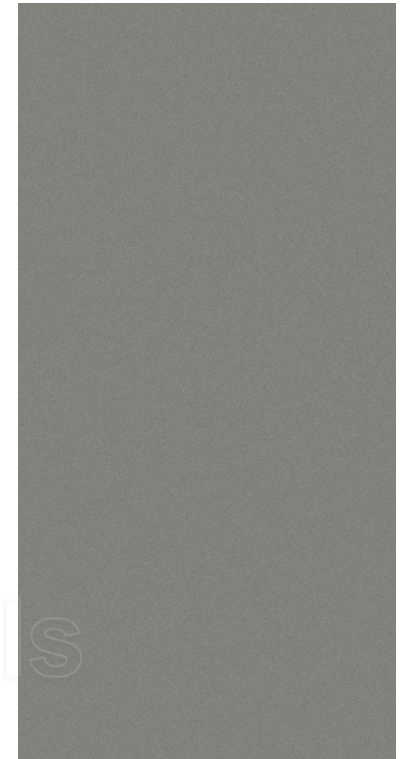
FY-033



FY-039



FY-019



FY-021

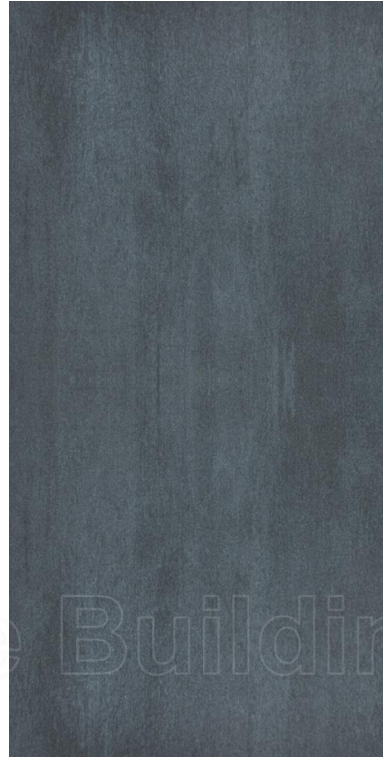
Aspire Building Materials

Item No.	Base Material	Height (mm)	Thickness (mm)
All color above	Particle board	2700	18/25

Matt FY series



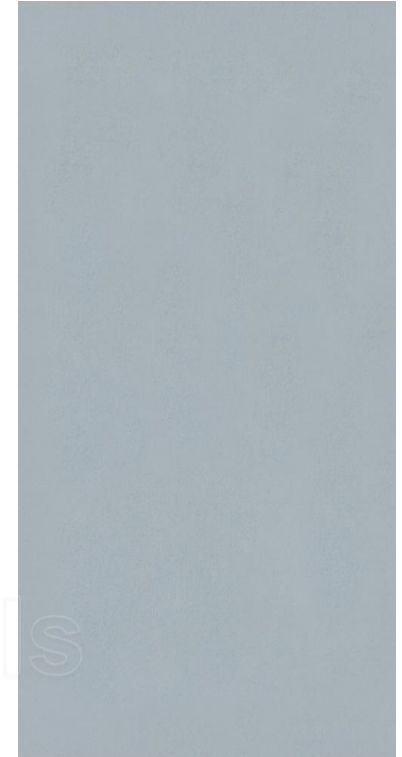
FY-050



FY-054



FY-056



FY-057

Item No.	Base Material	Height (mm)	Thickness (mm)
All color above	Particle board	2700	18/25

Matt FY series



FY-061



FY-068



FY-069



FY-070

Item No.	Base Material	Height (mm)	Thickness (mm)
All color above	Particle board	2700	18/25

Matt FY series



FY-072



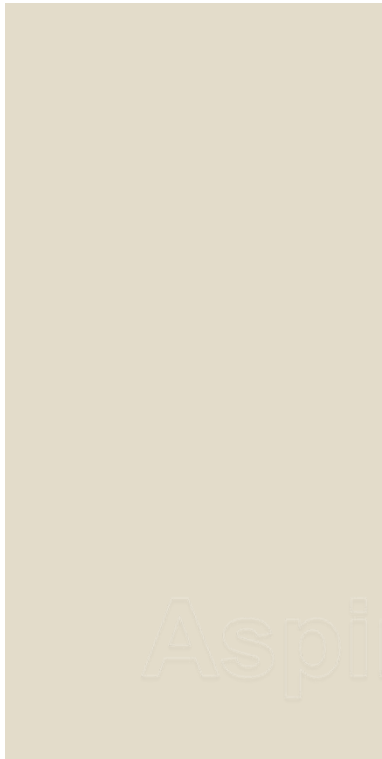
FY-075



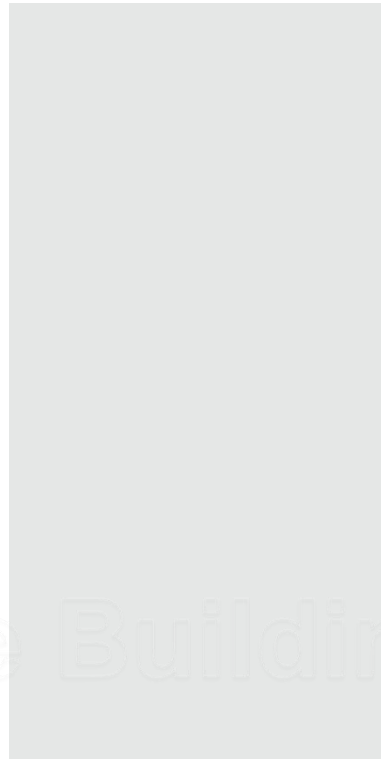
FY-076

Item No.	Base Material	Height (mm)	Thickness (mm)
All color above	Particle board	2700	18/25

Gloss LCT series



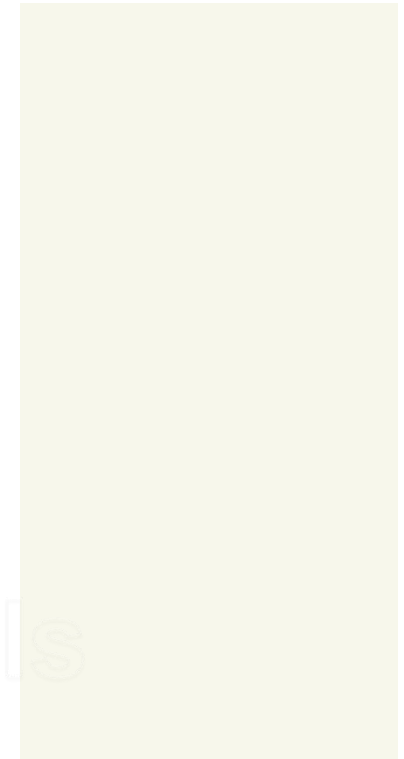
LCT-3003



LCT-3004



LCT-3005



LCT-3006

Aspire Building Materials

Item No.	Base Material	Height (mm)	Thickness (mm)
All color above	MDF	2400	18
	Plywood	2400	18

Gloss LCT series

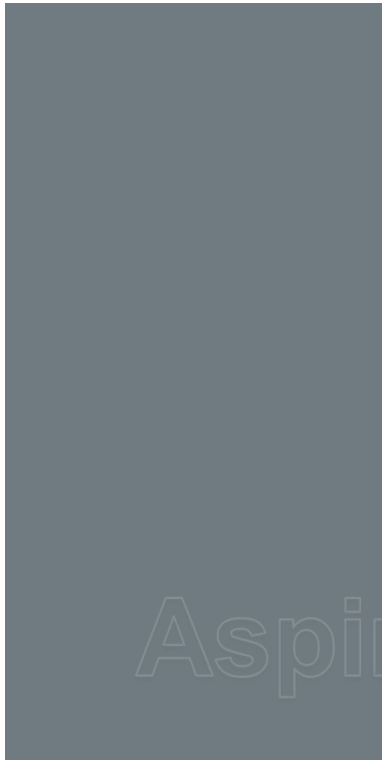


LCT-3008

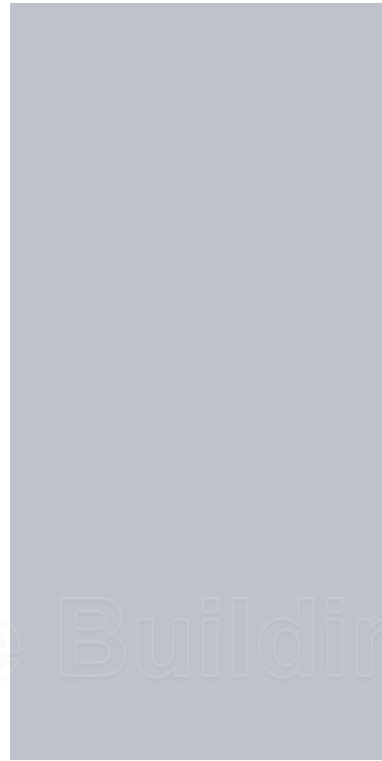
Aspire Building Materials

Item No.	Base Material	Height (mm)	Thickness (mm)
All color above	MDF	2400	18
	Plywood	2400	18

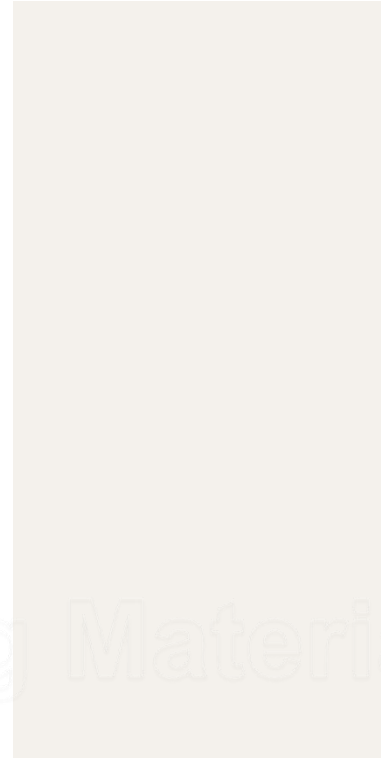
Matt LCT series



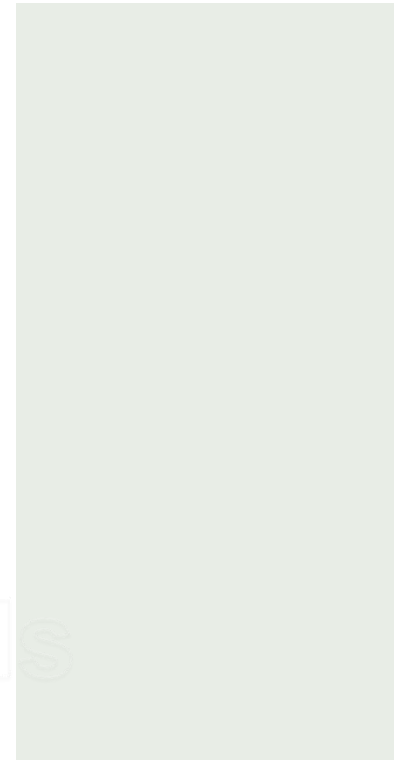
LCT-3032



LCT-3034



LCT-3035



LCT-3036

Aspire Building Materials

Item No.	Base Material	Height (mm)	Thickness (mm)
All color above	MDF	2400	18
	Plywood	2400	18

Austria EGGER series



F434 ST20



F638 ST16



U963 ST9



U999 ST9

Item No.	Base Material	Height (mm)	Thickness (mm)
All color above	Particle board	2700	18/25

Austria EGGER series



H1379 ST36



H3157 ST12



H3325 ST28



H3331 ST10

Item No.	Base Material	Height (mm)	Thickness (mm)
All color above	Particle board	2700	18/25

Austria EGGER series



H3309 ST28



H3332 ST10



H3342 ST28



H3702 ST10

Item No.	Base Material	Height (mm)	Thickness (mm)
All color above	Particle board	2700	18/25

Austria EGGER series



H1145 ST10



H1181 ST37



H1210 ST33



H1377 ST36

Item No.	Base Material	Height (mm)	Thickness (mm)
All color above	Particle board	2700	18/25

Austria EGGER series



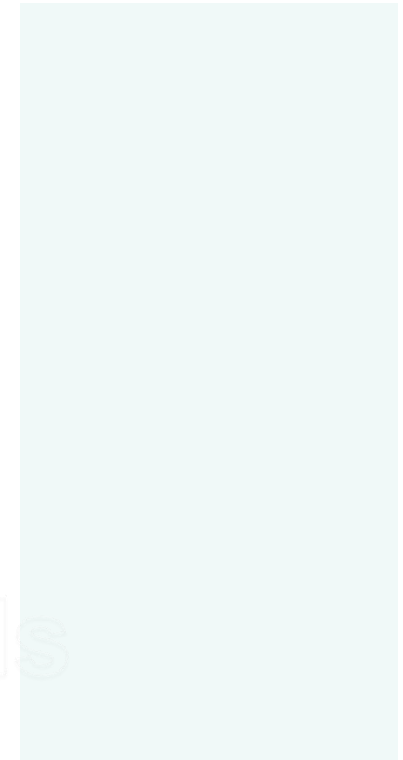
F206 ST9



H1253 ST19



H3190 ST19



W1000 ST9

Item No.	Base Material	Height (mm)	Thickness (mm)
All color above	Particle board	2700	18

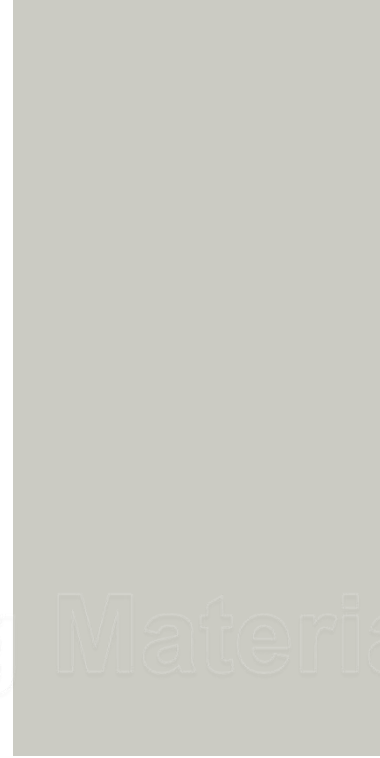
Austria EGGER series



F242 ST10



H3192 ST19



U702 ST9

Aspire Building Materials

Item No.	Base Material	Height (mm)	Thickness (mm)
All color above	Particle board	2700	18